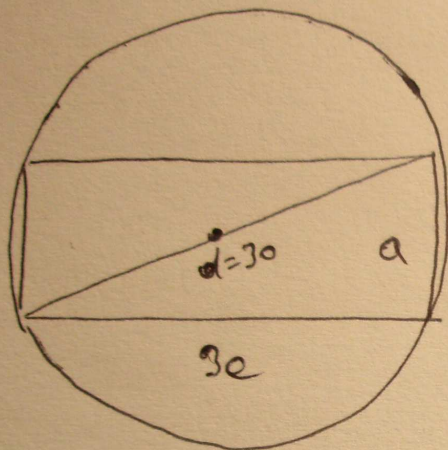


1)



~ TLK. PITAGORAS

$$a^2 = e^2 + 9e^2$$

$$a^2 = 10e^2$$

$$30^2 = 10e^2$$

$$900 = 10e^2$$

$$90 = e^2 \quad | \sqrt{\quad}$$

$$e = \sqrt{90} = 3\sqrt{10}$$

$$3e = 3 \cdot 3\sqrt{10} = 9\sqrt{10}$$

$$P_{\square} = 3e^2 = 3 \cdot (3\sqrt{10})^2 = 3 \cdot 90 = 270 \text{ cm}^2$$
