

# 56 Data presentation 2

## A Line graphs

Notice the verbs used to describe changes over a period of time.

rise  
increase  
go up

fall  
drop  
decrease  
go down

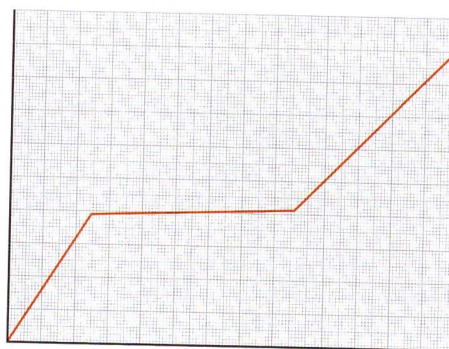
reach a peak

remain the same

Notice the difference:

rise sharply  
steeply  
rapidly

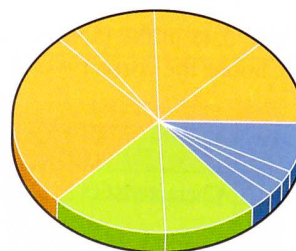
rise steadily  
gradually



A line graph

## B Pie charts

Pie charts are an effective way of showing the relationship of parts to a whole: the complete circle or pie represents the whole, while the parts are represented by **segments** or **slices**. In this pie chart, which shows a health authority's costs, the orange slice **represents** costs of hospital services. So, hospital services **account** for 60% of the costs.

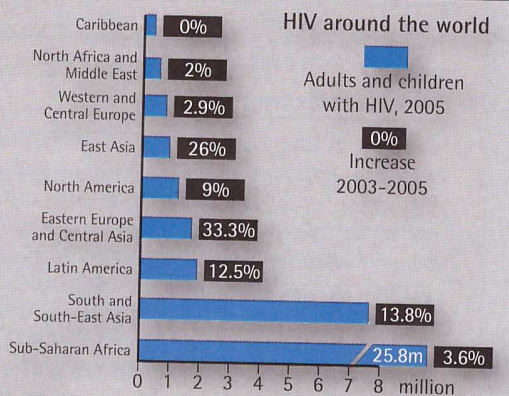


Hospital services

## C Describing trends

The bar chart below shows the prevalence of HIV in different countries.

HIV rates have **fallen** in some countries as a result of safer sex, but the overall **trend** is an increase in HIV infections. The **steepest** increases in HIV infections occurred in Eastern Europe, Central Asia and East Asia; but sub-Saharan Africa continued to be the most affected part of the world. Adult infection rates in Kenya have **dropped** from a **peak** of 10 per cent in the late 1990s to 7 per cent in 2003. HIV rates in pregnant women in Zimbabwe also **fell** over the past two years.



The Times

- 56.1** Complete the table with words from A opposite. Put a stress mark in front of the stressed syllable of two-syllable words. The first one has been done for you.

Verb	Noun
	'decrease
	drop
	fall
	increase
	rise

- 56.2** Choose the correct words to complete the description of the bar chart. Look at A and C opposite to help you.

Figure 6 shows that the overall number of cases of HIV (1) ..... (dropped / remained the same) yearly until 1988, then (2) ..... (rose/dropped) (3) ..... (sharply/gradually). Cases in heterosexual men and women (4) ..... (increased/fell) (5) ..... (steeply/steadily), especially for people exposed abroad. The number of infected people injecting drugs (6) ..... (fell/rose) after (7) ..... (reaching a peak / dropping) in 1987. This may be because of the development of needle exchange schemes. Mother-to-infant transmission (8) ..... (represented/accounted) for a small number of cases. Careful management of labour greatly reduced the number in the late 1990s.

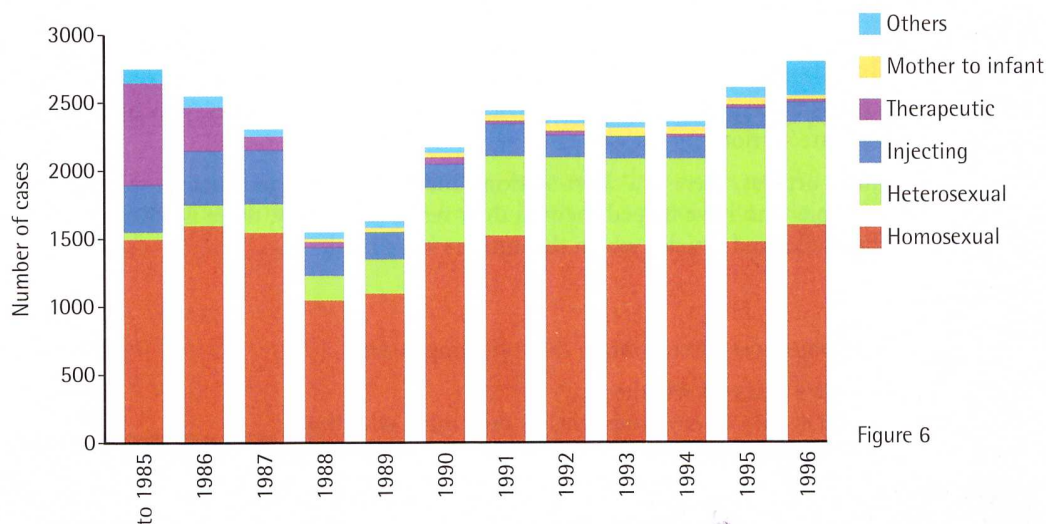


Figure 6

- 56.3** Which type of graph would best represent the following data?

- 1 Birth rates in the UK from 1980 to 2010
- 2 Incapacity due to five different causes from 1995 to 2005
- 3 Sources of ionizing radiation in the UK

Over to you



Draw a pie chart or bar chart which shows the approximate costs of the health service in your country. Practise describing the chart.